

Swine Selection

Sarah-Jane French, Professor of Practice- Youth Livestock Programs, Auburn University- Department of Animal Sciences



Breeding Gilt Priorities

1. Functionality

- Structure
- Body

2. Balance and Eye Appeal

3. Muscle

4. Fleshing ability/ Optimal Condition

Functionality= Structure and Body

For a gilt to be labeled as functional, she must be structurally sound, stay in adequate condition to breed, farrow piglets with minimal assistance, and raise her progeny



Breeding Gilt Environment- Functionality is Critical

- Confined setting and farrow in crates
- If Poor structured..
 - Spend more time lying down and not as productive
- If they have one-dimensional rib shape
 - Sows have more difficulty getting up and down
 - Shoulder abrasions



Structure

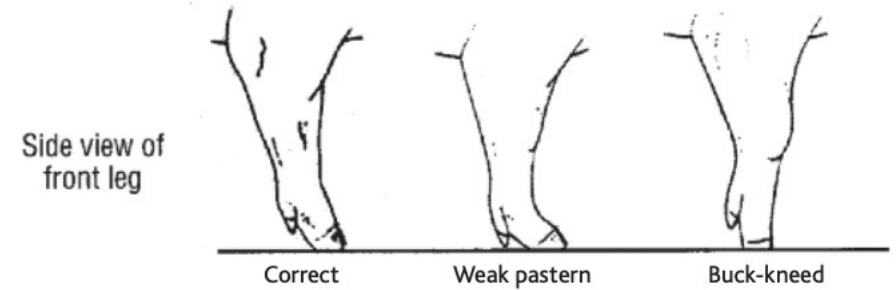
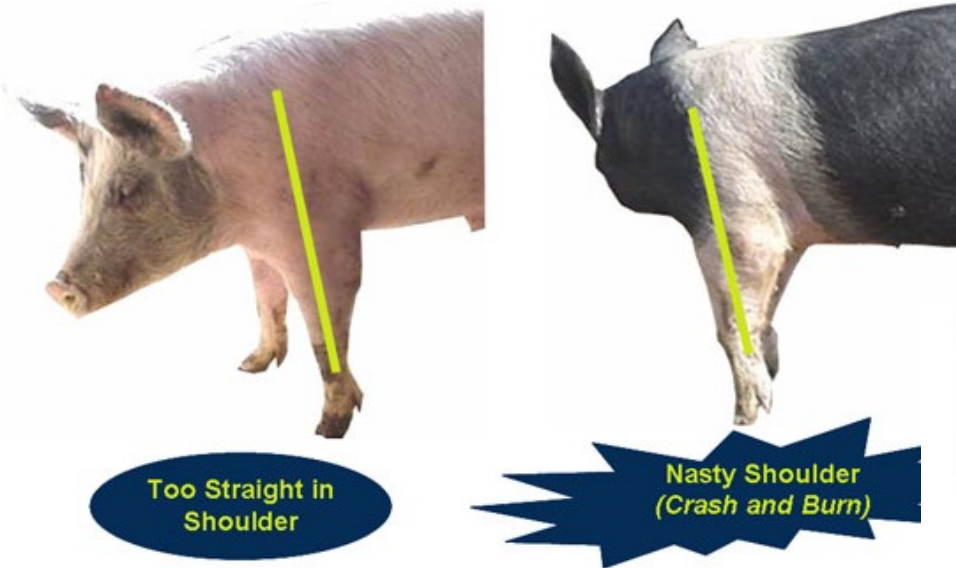
Flexible, durable females that can hold up in production



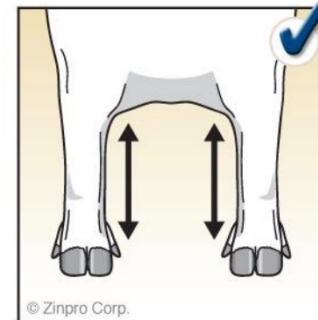
Front End Skeleton

Evaluating Structure/Soundness – Shoulders –

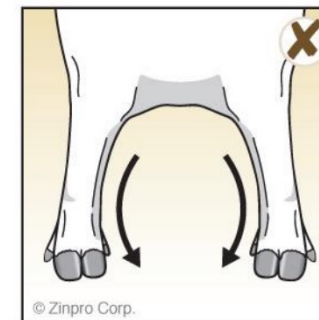
- Want 45° angle to shoulder
- Appropriate bend to knee
- Square kneed
- Cushion to pastern



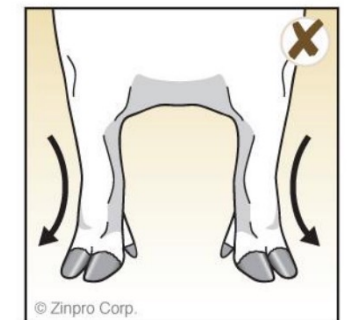
Foot Position (front legs)



Square and sturdy stance



Toes turn in, bow-legged

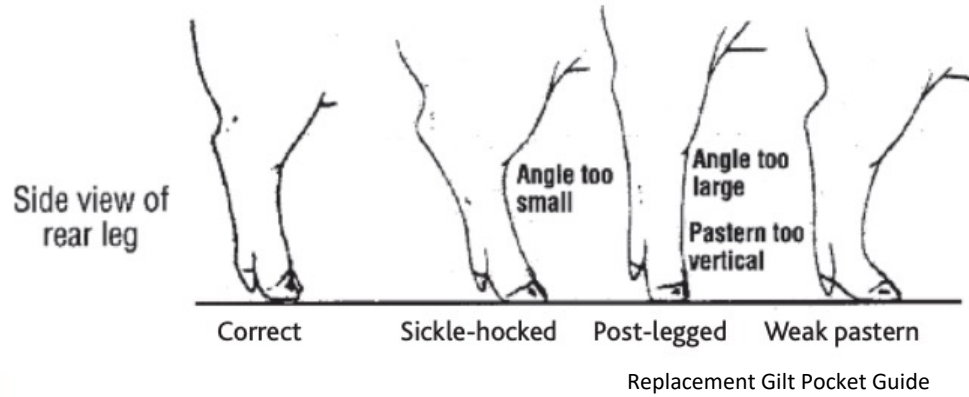


Toes turn out, pigeon-toed

Zinpro Performance Minerals



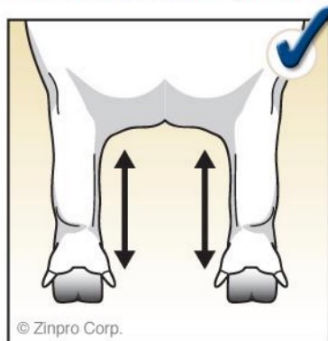
Rear End Skeleton



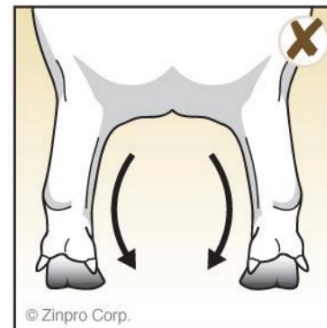
Evaluating Structure/Soundness – Rump –



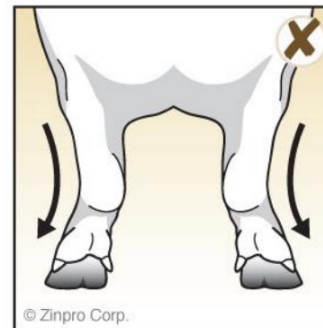
Foot Position (hind legs)



Toes forward, legs straight



Toes in, bow-legged



Toes out, cow-hocked

Zinpro Performance Minerals



Foot Structure

- Ideal Toes:
 - Big
 - Evenly sized
 - Spread apart



Even toe size and spread

Replacement Gilt Pocket Guide



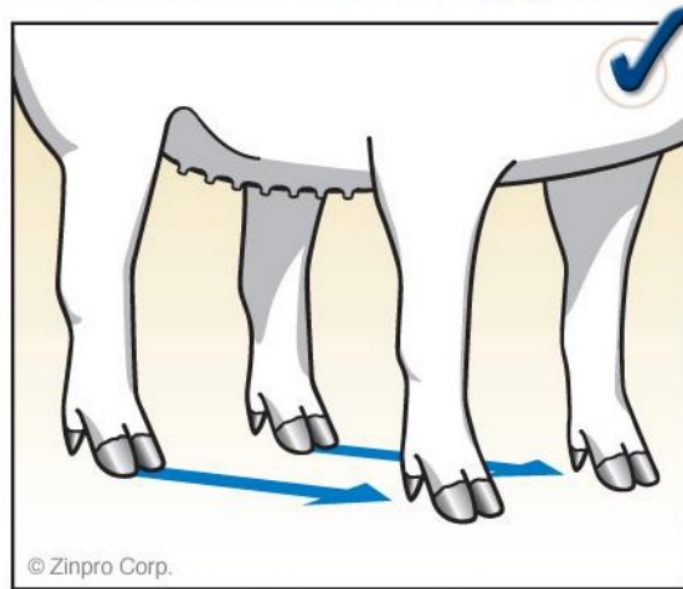
Uneven toe size and spread



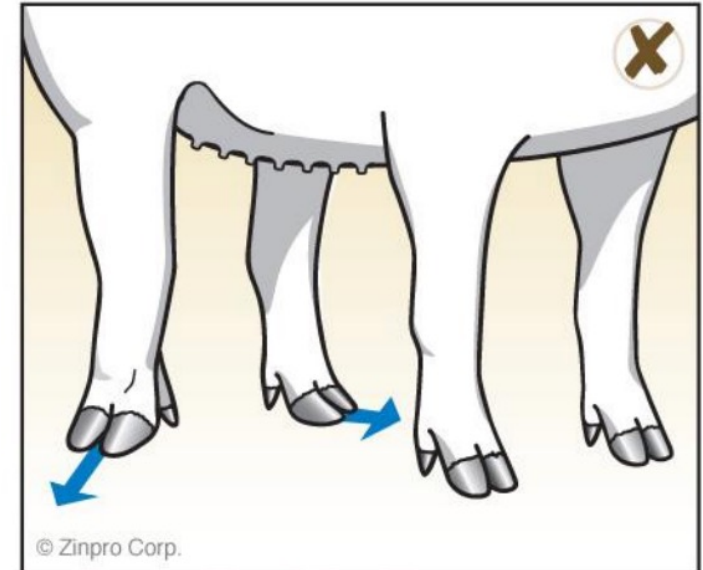
Feet and Leg Alignment

- Want feet and legs to stay square on all four corners

Front and Rear Feet Alignment



Front and back feet parallel

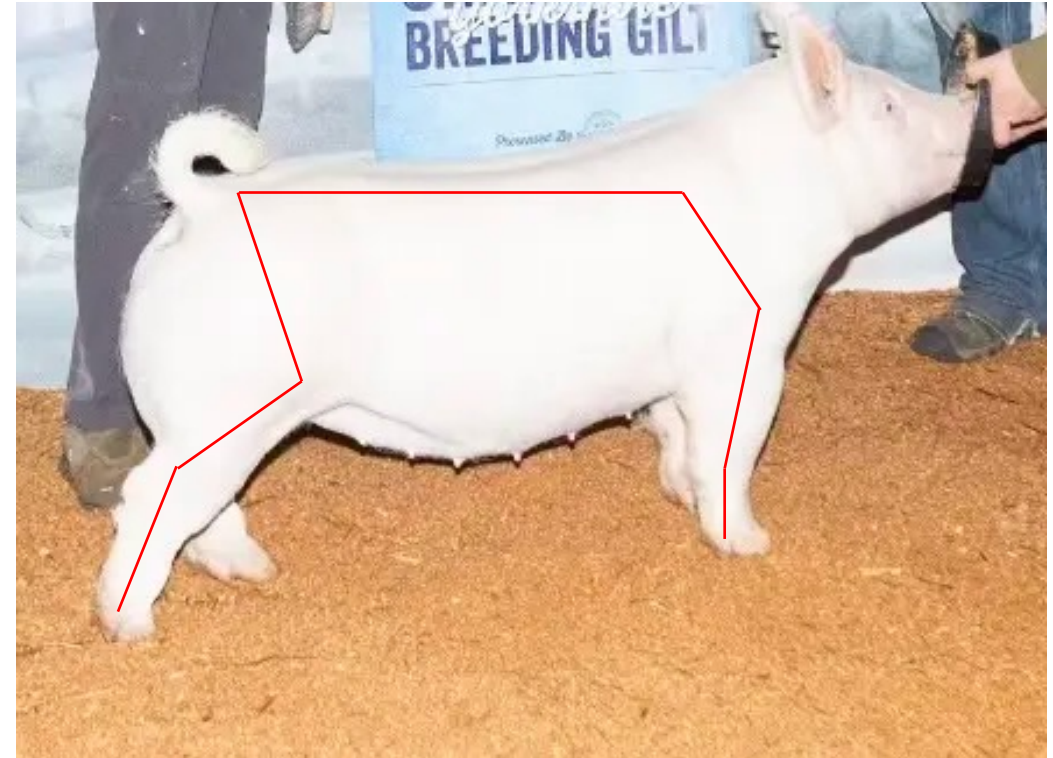


Feet do not align from front to rear

Zinpro Performance Minerals



Ideal Structure



Google Images



Example of Poor Structured



Evaluating Body

- Components
 - Boldness of rib
 - “C”- shape
 - Softness of center body



Pulse Sullivan Supply

Soft, maternal rib depth



Bold turn to rib shape

Google Images



Functional or non-functional? Why?



Google Images





Balance and Eye Appeal

Proportionality, design, and attractiveness



Balance

- All parts of the animal match and fit together
- Think of puzzle pieces
 - Front 1/3 matches middle 1/3 which matches rear 1/3

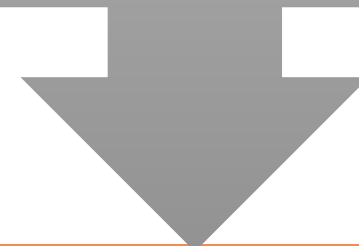


Google Images



Eye Appeal

The extras that “catch” your eyes or
“draw” your attention to that animal



Eye appeal traits

Length and
extension

Levelness of design

Attractiveness of
hip and hind leg

Discuss these gilts' balance and eye appeal ...



Google Images



Muscle

In breeding animals, females need to be equipped with enough muscle to positively impact the next generation



Evaluating Muscle

- Going way
 - Wide upper pinset and hip
 - Wide based
- Coming at you
 - Wide chested
 - Big forearm
- Up high
 - Mass and spread down top

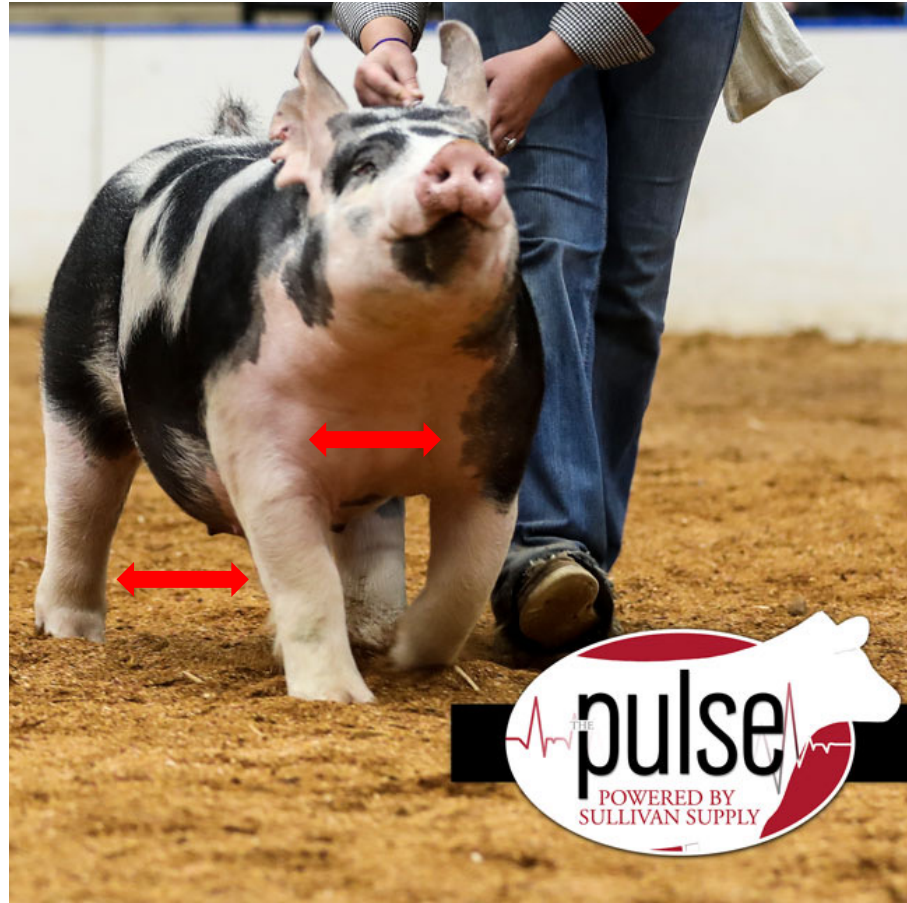


Google Images



Skeletal Width & Body- Foundation for Muscle

- Study hogs coming and going



Pulse, Sullivan Supply





Fleshing Ability and Optimal Condition



Fleshing Ability and Optimal Condition

- Gilts need to be appropriately managed to stay in ideal condition
 - Overly fat: Reproductive, fertility and production issues
 - Prone to more structure complications
 - Too lean: Reproductive, fertility, and production issues
 - Fewer pigs born alive, increased non-productive days

Too lean, hard doing



Appropriate in condition



Reproductive Soundness-Underline

- Female must have functional teats to raise offspring
- Well-spaced
- Prominent
- Even size
- At least 6 on each side



Replacement Gilt Pocket Guide



Market Hog Evaluation



Market Hog Priorities

1. Carcass Value

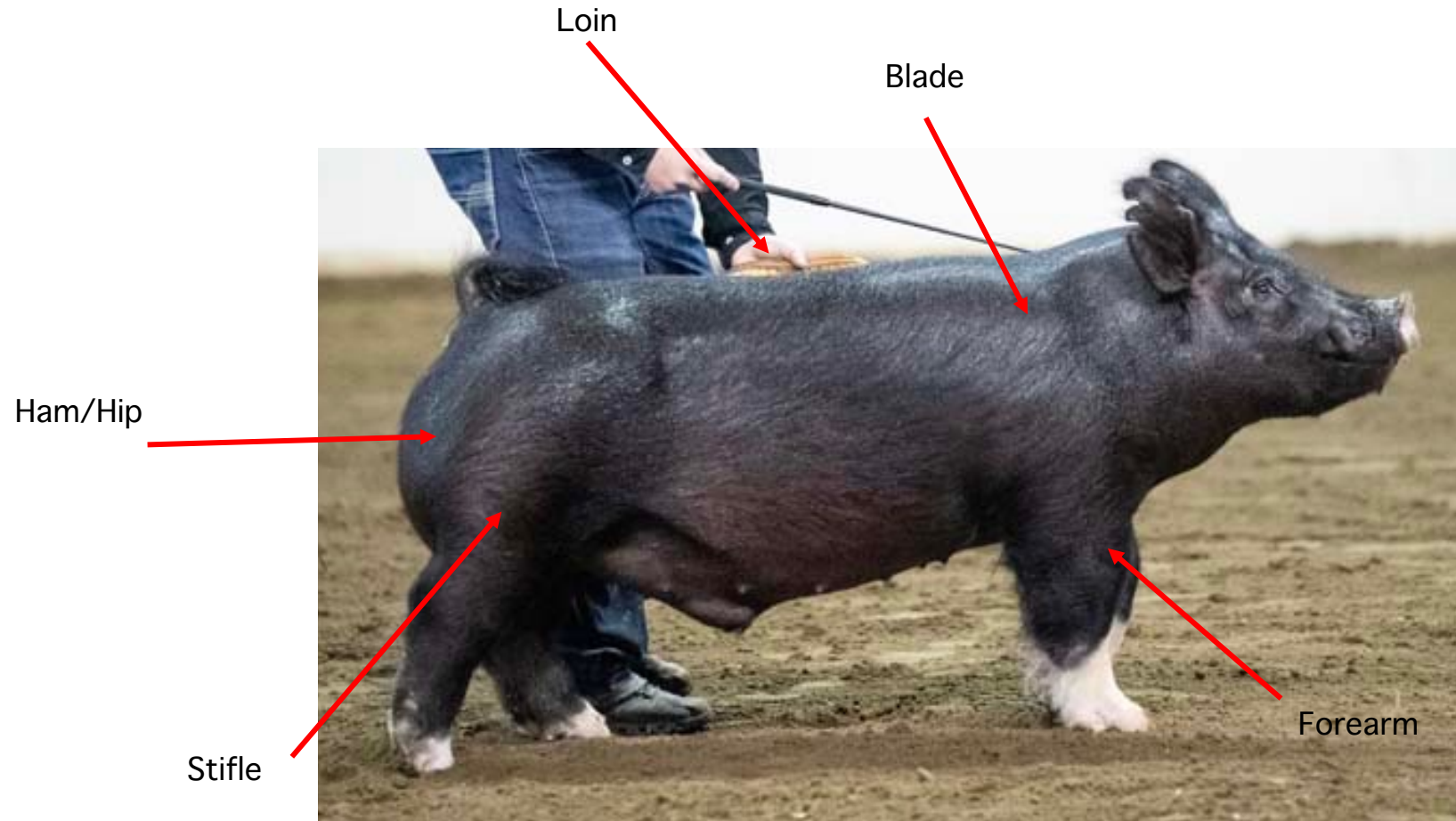
- Muscle
- Leanness

2. Practicality

- Structure
- Body

3. Balance and Eye Appeal

Evaluating Muscle: Indicators

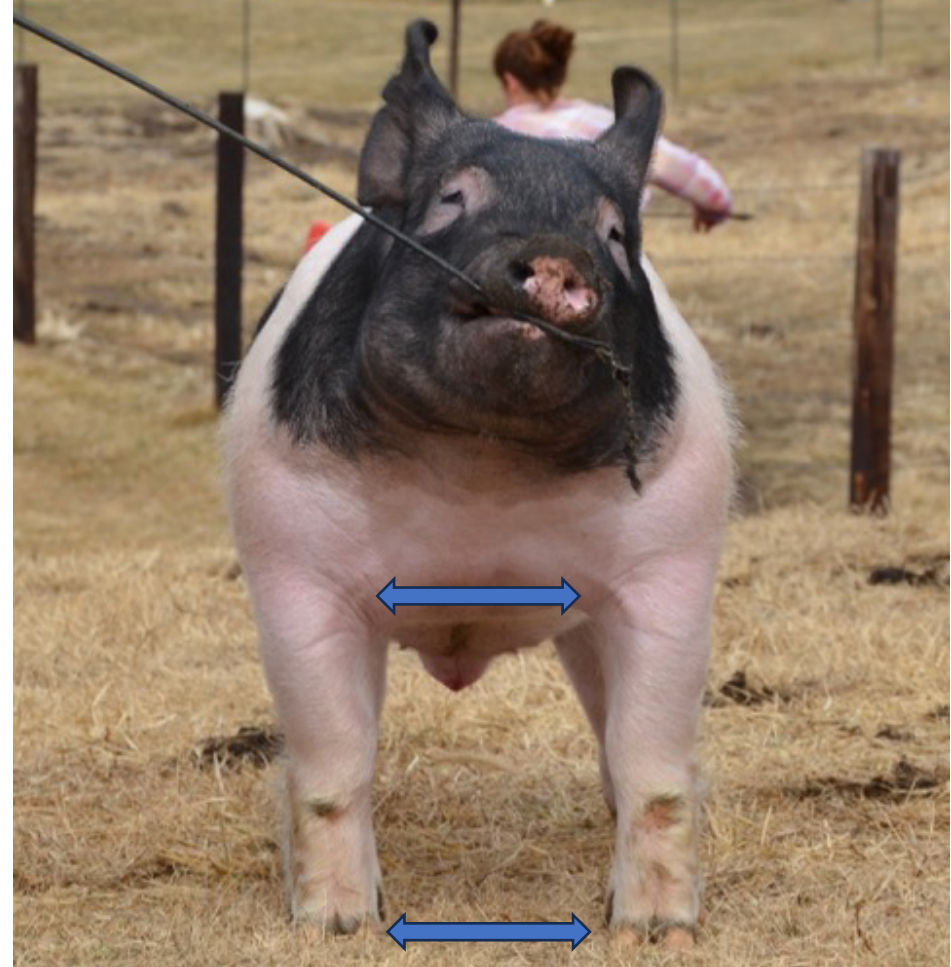


Pulse, Sullivan Supply



Evaluating Muscle- Front View:

- Chest width
- Base width
- Forearm Shape

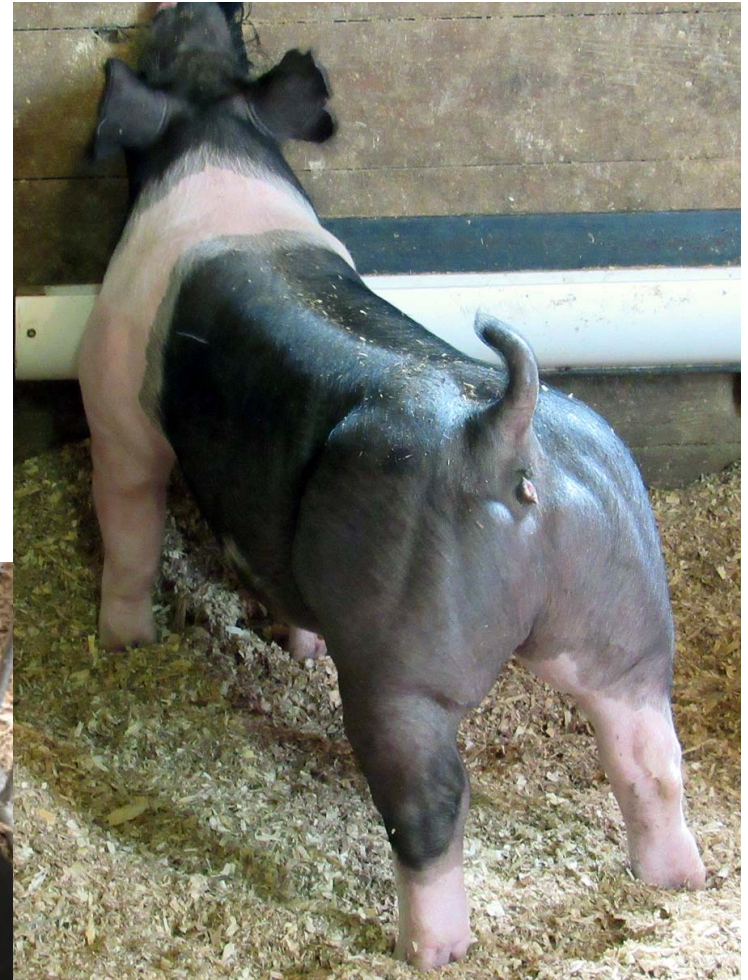


Google Images



Evaluating Muscle- Top View

- Width down top
- Shape and muscle expression
 - “Groove down back”



Google Images



Evaluating Muscle- Rear View:

- Wide Upper Hip
- Width of base
- Shape and Expression to Ham



Google Images



Evaluating Muscle- Rear View:



Google Images



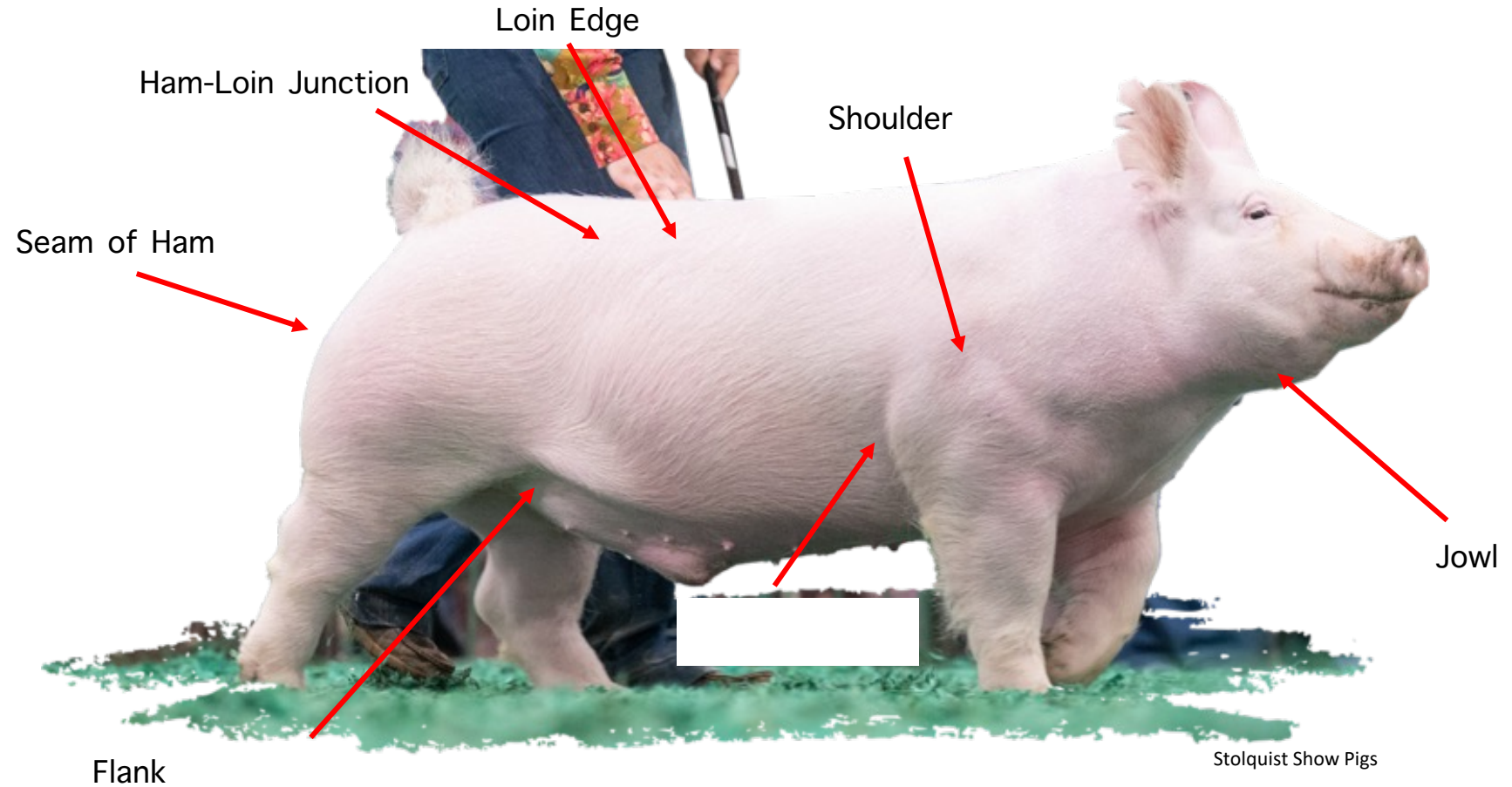
Narrow Light Muscled Examples



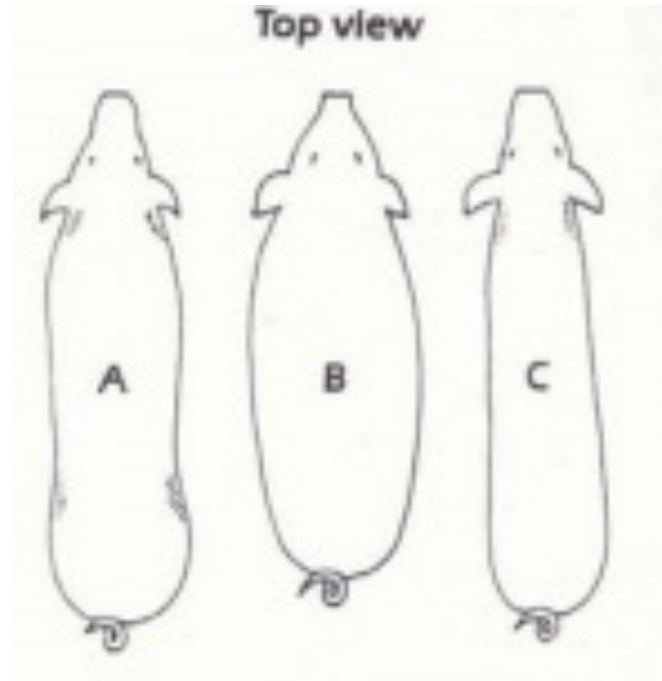
Google Images



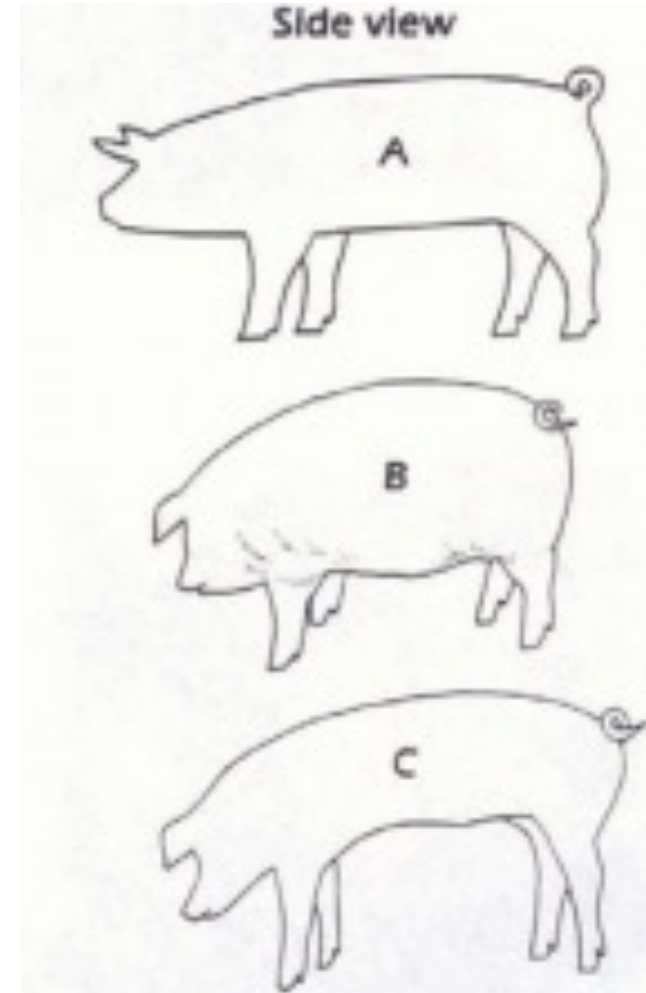
Evaluating Leanness: Indicators



Evaluating Carcass Value/Composition



- A- Ideal in Fat Cover
- B- Excessively Fat
- C- Too lean and light muscled



Examples of Poor Composition Hogs



Google Images

- Too smooth in appearance
- Wastier jowled and lower 1/3rd
- Non-descript round muscle shape





Practicality

Structure and Body



Ideal Market Hog Structure

- Relaxed in shoulder and knee
- Level and flexible spine
- Long and level hiped
- Appropriate set to hock
- Cushion to ankle (pastern)
- Stout legged

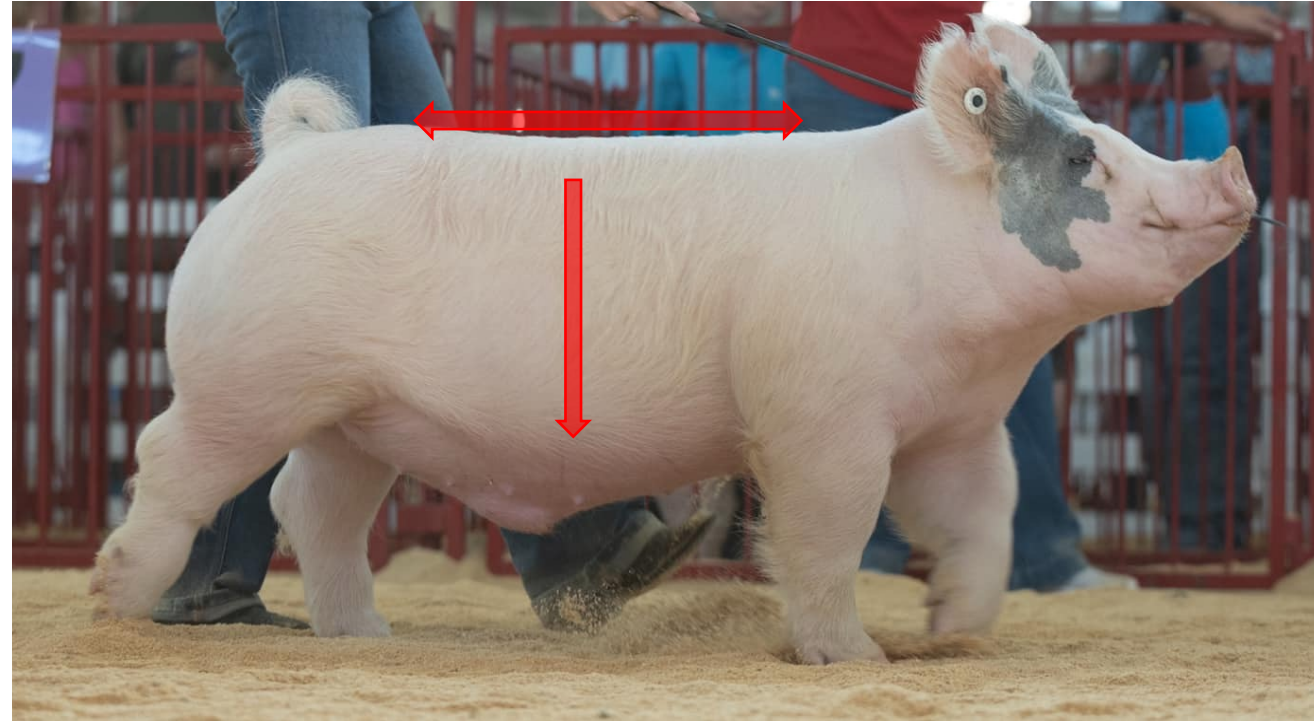


Formula of Champions



Body

- Three components
 - Boldness of rib
 - Softness/depth of rib
 - Length of Body



Google Images



Example of Not Practical Bodied or Built...



Google Images



Balance and Eye Appeal

Considered an added bonus.... when market hogs “check the boxes” of carcass value and practicality priorities then sort on balance and eye appeal



Balance

- An animal's proportionality
- Ask "Do all the parts of this animal seem make sense or match?"
- Remember puzzle pieces
 - Front Third
 - Middle Third
 - Rear Third



Google images



Stohlquist Show Pigs



Eye Appeal

- Up headed
- Clean jowled/jawed
- High neck attachment
- Level topped and hipped
- Clean lower 1/3
- All 1/3's match and blend together



Google Images



Evaluate this barrows balance and eye appeal



Google Images



Resources

- <https://vetmed.iastate.edu/sites/default/files/vdpam/Extension/Dairy/Biomechanics.pdf>
- Replacement Gilt Evaluation Pocket Guide;
<https://porkcdn.s3.amazonaws.com/sites/all/files/documents/PorkStore/04764.pdf>
- Stohlquist Show Pigs, <https://stohlquistshowpigs.com/>

