

Auburn University College of Agriculture

FIRST **PLANTS, INSECTS** **AND MICROBES** **SYMPOSIUM**

MAY 17, 2024
AUBURN, AL

*Academic Classroom and Laboratory Complex
(ACLC)*

Room Information

ACLC 012: Oral Presentations

ACLC 202 & 208: Posters

Wi-Fi Details

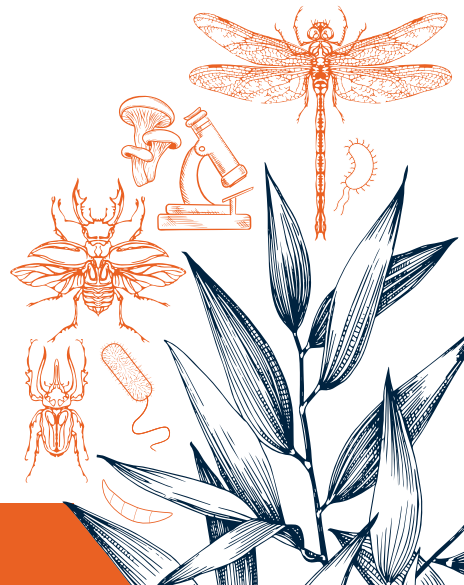
Username: au073321

Password: 5847



AUBURN

Entomology and Plant Pathology



Agenda

► Morning Sessions

- 7:45-8:10 am** Collect your registration badge, set up your presentation/posters and grab yourself a cup of coffee
- 8:10-8:15 am** Welcome remarks by Dr. David Held
- 8:15-9:00 am** **KEYNOTE: Dr. Carolee Bull**
Professor of Bacterial Systematics and Plant Pathology, Plant Pathology and Environmental Microbiology, Penn State
- Mushroom Microbiome*
-

Session I *Graduate Student Presentations* *10 minutes each (8-minutes presentation, 2-minutes questions)*

- 9:00-10:00 am** **Kayla Sullins, Auburn University, kzs0070@auburn.edu**
Utilization of Plant Growth-Promoting Rhizobacteria for Disease Suppression of *Rhizoctonia solani* and Growth Promotion in Peanuts and Turfgrass
- Amanpreet Kaur, Auburn University, azk0151@auburn.edu**
How do global changes steer the host-pathogen arms race?
- Dylan Brown, Auburn University, djb0094@auburn.edu**
Unveiling the Dominance of Insecticide Resistance in the Mosquito *Aedes aegypti*
- Jill Presel, University of South Alabama, jep2222@jagmail.southalabama.edu**
Dissecting the functions of *Salmonella enterica* effectors in plant infection
- Simrandeep Kaur, Auburn University, szk0232@auburn.edu**
Unraveling the Mechanism of Plant Growth Promoting Rhizobacteria Mediated-Induced Systemic Resistance
- Abigayle Crochet, Auburn University, aec0118@auburn.edu**
Assessing the effects of biochar on wildflower species native to the southeastern United States
- 10:00-10:20 am** Break

View the event online



aub.ie/2024ENPP

Session II Student Presentations
10 minutes each (8-minutes presentation, 2-minute questions)

10:20-11:30 am **Karamjit Kaur Baryah, Auburn University, kkb0034@auburn.edu**
Areolate Mildew and Target Spot: Impact of Cultivar Selection and Fungicide Applications on Disease severity and yield on Alabama Cotton

Zachary Beneduci, Auburn University, zzbo018@auburn.edu
Biochar impacts on pollinator planting community characteristics in a southeastern soil

Aerianna Littler, Auburn University, azl0117@auburn.edu
Seasonal Activity of Chilli Thrips in Nurseries

Rogan Tokach, Auburn University, rtt0016@auburn.edu
Tropilaelaps mercedesae management: Combining cultural and chemical control methods

Somraj Shreshta, Auburn University, szs0363@auburn.edu
Virulence of fungal isolates of Beauveria bassiana and Beauveria brongniartii against multiple insect hosts: A comparative study with nine isolates

Navdeep Kaur, Auburn University, nzk0059@auburn.edu
Assessing the host range of Xylella fastidiosa strains isolated from diverse plants in Europe

11:30-12:45 pm **Lunch at The Edge Dining Hall**

▶ Afternoon Sessions

1:00-1:45 pm **KEYNOTE: Dr. Ken Narva**
Research Fellow and Head of Insecticides at GreenLight Biosciences

Development and Commercialization of RNA-Based Biopesticides

1:45-3:10 pm **Posters with coffee/tea (ACLC 202 and 208)**

Session III Oral Presentations
10 minutes each (8-minutes presentation, 2-minutes questions)

3:15- 3:45 pm **Anthony Cuminale awc0026@auburn.edu**
Evaluating the Effects of Tillage Type on Ground Nesting Bees

Nicholas Mueller mnm0059@auburn.edu
Yeast two-hybrid screening for cotton leafroll dwarf virus-Aphis gossypii interactions

Session IV *Oral Presentations*
15 minutes each (12-minute talk, 3-minute questions)

- 3:45-4:45 pm** Tuan Tran, Assistant Professor, University of South Alabama, tmtran@southalabama.edu
Interactions at the membrane-membrane interface: outer membrane vesicles modulate the outcomes of plant-bacterial interactions
- César Escalante, Postdoc, Auburn/USDA, cesare@auburn.edu
High-throughput sequencing reveals diverse viral communities in cotton
- Morgan Bragg, Postdoc, Auburn, mtb0113@auburn.edu
Monitoring cotton soil-borne seedling diseases through metabarcoding and shotgun metagenomics
- Clement Akotsen-Mensah, State Extension Specialist - Integrated Pest Management akotscl@auburn.edu
Developing a Cloud-Based Monitoring System and Degree Day Model for Spotted Wing *Drosophila*, *Drosophila suzukii* (Matsumura) (Diptera: Drosophilidae)

4:45-5:15 pm Award Ceremony

Thank You Sponsors!



 **BASF**

We create chemistry

eppendorf

 **avantor**[™]
delivered by **VWR**[™]

 **NICHINO**